

NEW

## LipoHerbasec®

Skin Care  
Hair Care

LipoHerbasec represents a new series of dry botanical extracts, embedded in a unique matrix of hydrogenated soybean lecithin and maltodextrin.

Available as an easy-to-use powder formula, LipoHerbasec synergistically combines the multifunctional benefits of phospholipids with a careful selection of botanical extracts, having in particular anti-inflammatory properties.

### Dry botanical extracts in a liposomal matrix

- Moisturizing & protective phospholipids
- Silky touch for skin and hair
- Easy to use
- 100% natural, plant derived
- Patented technology

## LipoHerbasec: Dry form of a liposomal delivery system

---

When LipoHerbasec is dispersed in water, liposomes are formed. They act as a delivery system for both water- and oil-soluble components of the herbal extract and can significantly increase their bioavailability.

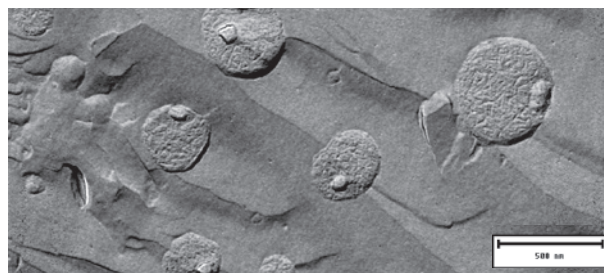


Fig. 1 Freeze fracture electron microscopy image of Arnica LipoHerbasec

## Properties

---

- **Silky Touch**  
Hydrogenated Lecithin provides a perfect skin feel. It leaves a soft and smooth feeling on the skin and provides shine and softness to hair.
- **Moisture & Protect**  
LipoHerbasec contains saturated phospholipids that are known to form a protective film both on skin & hair and thereby prevent water loss<sup>[1]</sup>.
- **Easy to use**  
LipoHerbasec gives formulators the chance to disperse hydrogenated lecithin (that normally needs heating) and plant extracts at room temperature, resulting in a slightly opaque solution.  
This liposomal dispersion can be added separately to formulations during the cooling phase of a cream or lotion.

## Chamomile LipoHerbasec® (410089.110.2)

---

German chamomile or camomile (*Chamomilla recutitia*/*Matricaria recutitia*) is a fragrant, low growing annual plant with white, daisy-like flowers. Native to Europe and N.W. Asia; naturalized in N. America and cultivated widely, especially in eastern Europe.



Name:	Kamille (DE), Camomille (FR)
Plant Properties:	Anti-inflammatory, Antibacterial <sup>[2,3]</sup>
INCI:	Maltodextrin, Hydrogenated Lecithin, Chamomilla Recutita (Matricaria) Flower Extract, Sodium Chloride

## Corn Flowers LipoHerbasec® (410088.110.2)

---

The cornflower (*Centaurea cyanus*) in the family of Asteraceae is an annual plant with star-like blossoms of brilliant blue, although they can also be white, pink or purple and are borne singly on stalks which can be seen above the corn, hence its name. It originated from the Mediterranean region and is widely cultivated as a garden ornamental.



Name:	Kornblume (DE), Bleuet (FR)
Plant Properties:	Anti-irritation, Anti-inflammatory <sup>[4,5]</sup>
INCI:	Maltodextrin, Hydrogenated Lecithin, Centaurea Cyanus Flower Extract, Sodium Chloride

## Echinacea Purpurea LipoHerbasec® (410090.110.2)

Echinacea comprise a genus of about 15 species of herbaceous plants of the family Asteraceae (Compositae), commonly called coneflowers. The three species of medicinal interest are Echinacea angustifolia, Echinacea purpurea and Echinacea pallida. The plants are usually hairy and produce flowering heads with purple to white florets and borne on a cone-shaped receptacle. Echinacea is native to the eastern United States and now widely cultivated and naturalised in European countries.

Name: Sonnenhut (DE), Echinac ea (FR)  
Plant Properties: Anti-inflammatory, Antioxidant<sup>[6,7,8]</sup>  
INCI: Maltodextrin, Hydrogenated Lecithin, Echinacea Purpurea Root Extract, Sodium Chloride



## Edelweiss LipoHerbasec® (410092.110.2)

Edelweiss belongs to the family of the Asteraceae and grows at altitudes of 2000 to 3000 metres. The edelweiss has long been a symbol of alpine pastures and purity. It can be found in many alpine regions of both Europe and Asia, but is particularly associated with Switzerland.

All Lipoid Kosmetik extracts of Edelweiss are prepared from cultivated Edelweiss and not from wild-picked plants to protect the endangered species.

Name: Edelweiss (DE),  edelweiss (FR)  
Plant Properties: Anti-inflammatory, Antioxidant<sup>[9,10]</sup>  
INCI: Maltodextrin, Hydrogenated Lecithin, Leontopodium Alpinum Flower/Leaf Extract, Sodium Chloride



## Ginseng LipoHerbasec® (410091.110.2)

Korean or Asian ginseng (Panax ginseng) is a member of the family Araliaceae. The flowers are small and borne in dense, branched clusters called compound umbels. The usually lobed or compound leaves are divided into separate leaflets. The root is spindle-shaped and brownish-yellow. It is native to north eastern China and extensively cultivated there and in nearby Russia as well as Korea and Japan.

Name: Ginseng (DE, FR)  
Plant Properties: Anti-aging, Skin Lightening, Anti-inflammatory, Antioxidant<sup>[11,12]</sup>  
INCI: Maltodextrin, Hydrogenated Lecithin, Panax Ginseng Root Extract, Sodium Chloride



## White Tea LipoHerbasec® (410087.110.2)

The tea plant (Camellia sinensis) belongs to the the family Theaceae. All types of teas (Black, Oolong, green, white and yellow) are produced from this plant - the difference between them is the part of the plant used and the fermentation and processing. White Tea is native to the South East of Asia.

Name: Weisser Tee (DE), Th e blanc (FR)  
Plant Properties: Anti-aging, Anti-microbial, Anti-inflammatory, Antioxidant<sup>[13,14,15]</sup>  
INCI: Maltodextrin, Hydrogenated Lecithin, Camellia Sinensis Leaf Extract, Sodium Chloride



## Recommended Application & Use Levels


---

- Skin Care, Hair Care, Body Care

Recommended use level: 1-2%

## Regulatory and Safety

---

Safety	<p>We affirm to the best of our knowledge the compatibility and non-toxicity of these products. They are safe for use at normal levels in skin and hair cosmetics. Nevertheless, this statement does not release the producer of the finished cosmetic product from the responsibility of conducting any tests required by local legislation.</p> <p>If applicable, please consult our list of allergens for the individual product (list according to the EU Cosmetic Legislation).</p>
EU Cosmetic Regulation	The products comply to the EU Cosmetic Regulation (EC) No 1223/2009.
Natural/organic	<p>These six LipoHerbasec® are raw materials approved by ECOCERT GREENLIFE, conform to the COSMOS Standard. They are approved for use in cosmetic products certified to the COSMOS-standard.</p> 
ABS	The plant materials fully comply with the requirements of Access and Benefit Sharing (ABS) as derived from the Nagoya Protocol and its corresponding national legislation. Detailed information about the compliance of each product is available.
EU Reach	The products, i.e. their substances, conform to the Regulation (EC) No 1907/2006.
China Reach	Chamomile LipoHerbasec®, Echinacea Purpurea LipoHerbasec®, Ginseng LipoHerbasec® and White Tea LipoHerbasec® conform to the legislation of China Reach.
China INCI	All INCIs are listed in the current Inventory of Existing Cosmetic Ingredient China (IECIC).
Halal	<p>All ingredients conform to HALAL requirements, considering the following:</p> <p>Traces of ethanol remaining in LipoHerbasec® at the end of the manufacturing process are technically unavoidable. The ethanol is plant-derived and non-GMO. Its concentration is equal or less than 0.002% at a maximal recommended use level of max. 2 % LipoHerbasec® in the final cosmetic product.</p>

## Literature

---

1. van Hoogevest et al., Phospholipids: Natural Functional Ingredients and Actives for Cosmetic Products, SOFW-Journal 139, 8-2013
2. Ferreira et al., Topical effects of Chamomilla recutitia in skin damage: A review, Pharmacology online, ISSN: 1827-8620, 2015
3. Srivastava et al., Chamomile: A herbal medicine of the past with bright future, Mol Med Report, 3(6): 895–901, 2010
4. Arif et al., The biological activity of Centaurea L. species, G.U. Journal of Science 17(4):149-164, 2004
5. Pharmacological and Biological Properties of some Centaurea Species, European Journal of Scientific Research, Vol.84 (3):398-416, 2012
6. Erenler et al., Chemical Constituents, Quantitative Analysis and Antioxidant Activities of Echinacea purpurea (L.) Moench and Echinacea pallida (Nutt.) Nutt., J of Food Biochemistry, 2015
7. Rezaie et al., Effects of Echinacea Purpurea on Wound Healing after Arsenic Induced Skin Necrosis, Zahedan J Res Med Sci, 15(11): 19-23, 2013
8. Soeberdt et al., Anti-inflammatory activity of alkylamides from Echinacea purpurea in keratinocytes in vitro and in mouse models of inflammatory skin diseases, J if investigative Dermatology, 2014
9. Schwaiger et al., Leontopodic acid - A novel highly substituted glucaric acid derivative from Edelweiss (Leontopodium alpinum Cass.) and its antioxidative and DNA protecting properties, Tetrahedron 61:4621–4630, 2005
10. Lulli et al., Anti-Inflammatory Effects of Concentrated Ethanol Extracts of Edelweiss (Leontopodium alpinum Cass.) Callus Cultures towards Human Keratinocytes and Endothelial Cells, Mediators of Inflammation, 2012
11. Hwang et al., Antiaging effects of the mixture of Panax ginseng and Crataegus pinnatifida in human dermal fibroblasts and healthy human skin, J Ginseng Res, 2016
12. Lee et al., Antimelanogenic Effects of Picrionoside A Isolated from the Leaves of Korean Ginseng, Biol. Pharm. Bull. 38, 1663–1667, 2015
13. Binic et al., Skin Ageing: Natural Weapons and Strategies, Evidence-Based Complementary and Alternative Medicine Vol 2013, Article ID 827248, 2013
14. Majid et al., In vitro antibacterial activity of Camellia sinensis leaf extracts to some selective pathogenic bacterial strains, Int. J. Biosci., Vol. 3(9):69-75, 2013
15. Jadoon et al., Anti-Aging Potential of Phytoextract Loaded-Pharmaceutical Creams for Human Skin Cell Longevity, Oxidative Medicine and Cellular Longevity, Vol. 2015, Article ID 709628, 2015

**Disclaimer:** All data and recommendations made herein are based on our present state of knowledge. We disclaim any liability on risks that may result from the use of our products, including improper and illicit use. Product properties identified and highlighted by specific tests or studies are to be interpreted in the context of the test/study conditions only. The listed properties of products without claim data have been sourced from literature and should be used as value-added information only. Please be aware that the use of any claim on cosmetic products is the sole responsibility of the customer and is regulated by your local Regulatory Body.