



CODIF
Technologie naturelle

SILENAGE

Anti-Ageing - Active Skins

For a skin that reflects your lifestyle - in High Density.





Silene colorata

CODIF Laboratories have developed an active ingredient that can counteract ageing accelerated by a hectic life (very busy life). It strengthens the biomechanical properties of the skin to make it firmer and tighter.

It comes out of our exclusive *Silene colorata* culture programme.

It reactivates the synthesis of the biomechanical components of the skin (structural proteins and the Dermal Epidermal Junction).

For a biologically younger skin - 4 years younger on average.

And it corrects the face oval (jowls, chin, nasal furrows).

WHAT MAKES IT UNIQUE

AN EXCLUSIVE CULTURE PROGRAMME

Silene colorata is a plant with fine and fragile flowers that grows in the Mediterranean basin. The culture programme set up by Codif includes a hydroponics development phase. This growing method on an inert base, supplied with a nutrient medium under controlled lighting, promotes flowering and therefore seeds production. The seeds are then used for propagating the plants under greenhouse.

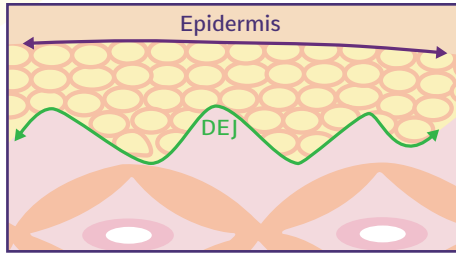
UNIQUE RESEARCH

To assess the impact of a hectic and busy lifestyle on ageing of the skin, Codif Laboratories used a unique model of reconstructed skin, cultured in the presence of the stress factor cortisol. The organism reacts in the same way when faced with a stressful situation as it does to a hectic and busy lifestyle.

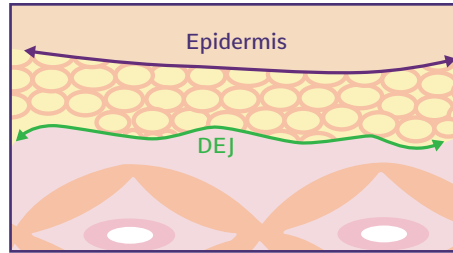
The studies focused on analysing components of the skin, particularly the morphology of the Dermal Epidermal Junction (DEJ). The DEJ Relief Index is directly correlated with the biological age of the skin.

THE ARCHITECTURE OF THE DERMAL EPIDERMAL JUNCTION (DEJ)

The DEJ is sinusoidal in shape in young skin but gets flatter with age. The DEJ Index defines the relief or architecture of the junction. Its value falls in direct proportion to biological ageing of the skin.



Young skin

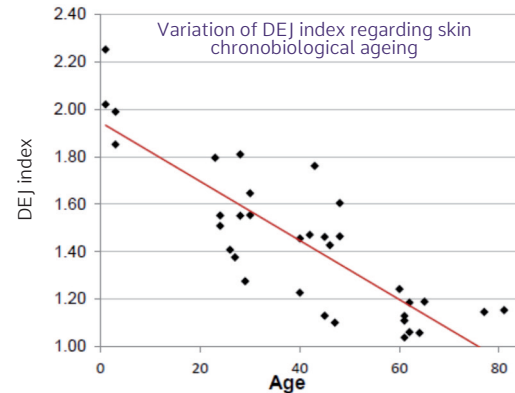


Aged skin

$$\text{DEJ index} = \frac{\text{DEJ length}}{\text{epidermis length}}$$

STUDY ON THE IMPACT OF A HECTIC LIFE ON DEJ RELIEF INDEX

Condition	Change in DEJ Relief Index
CHRONOBIOLOGICAL AGEING 45 years vs 25 years	-0.25 units
HECTIC LIFE hectic skin model versus conventional skin model	-0.008 units
In the same way as chronobiological ageing, a hectic life changes the architecture of the DEJ	



RESTORES THE BIOMECHANICAL COMPONENTS OF THE SKIN

The biomechanical properties of the skin, its ability to resist deformation, pressure and other physical stresses are provided by components of the dermis, and particularly by the DEJ. The DEJ is the only structure which ensures cohesion between the epidermis which experiences external stresses and the dermis which provides underlying mechanical support.

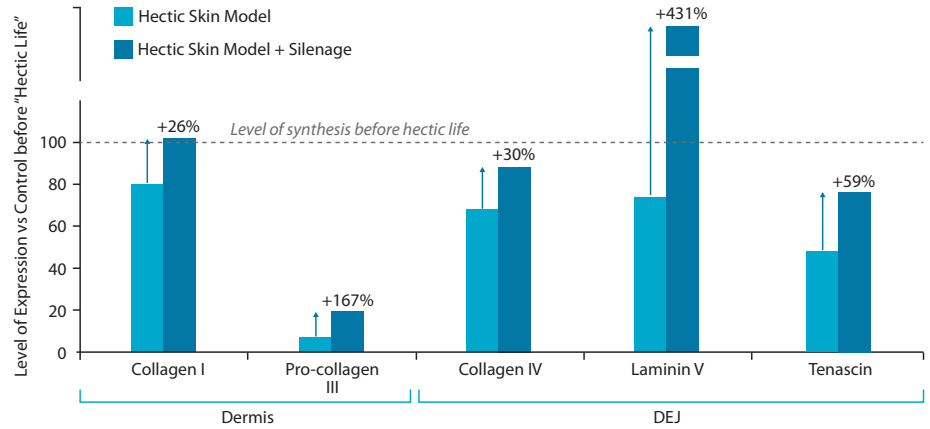
Silenage reactivates the synthesis of components of the dermis and of the DEJ which are weakened by a Hectic Life.

A BIOLOGICALLY YOUNGER SKIN

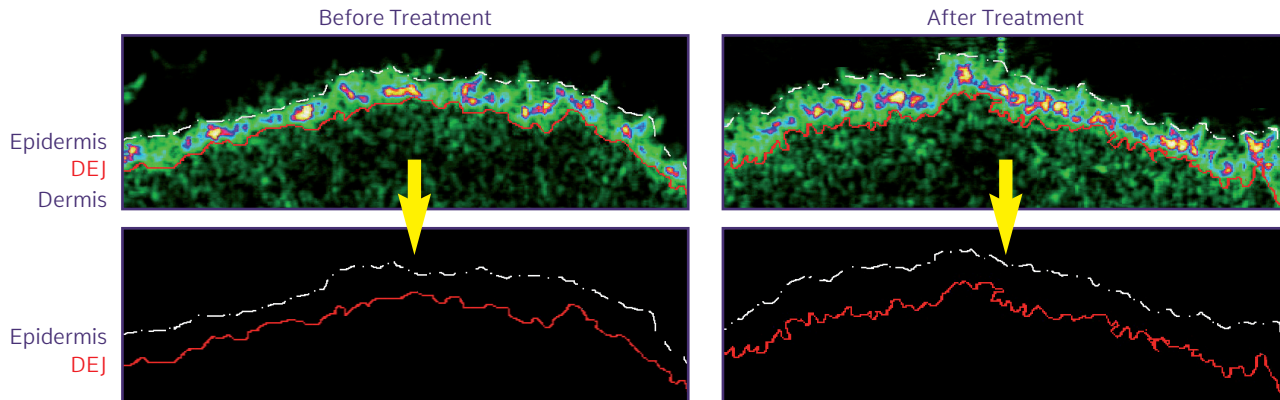
Tested on 33 volunteers for 28 days, Silenage restores sinusoidal relief to the junction. While chronobiological ageing induces a fall in the DEJ Index of 0.0125 units per year, within 28 days Silenage increases the DEJ index by 0.05 units on average and up to 0.22 units.

The skin becomes 4 years biologically younger on average.

Tested at 1% on reconstructed skins, Silenage reactivates the synthesis of components of the dermis and DEJ.



Tested at 1% on 33 volunteers for 28 days, Silenage increases the DEJ relief index. The junction regains a sinusoidal relief. The skin becomes 4 years biologically younger on average.



PRODUCT BENEFITS

ANTI AGEING
TONING
REMODELLING

EX-VIVO

+26% collagen I synthesis.
+167% pro-collagen III synthesis.
+30% collagen IV synthesis.
+431% laminin V synthesis.
+59% Tenascin synthesis.

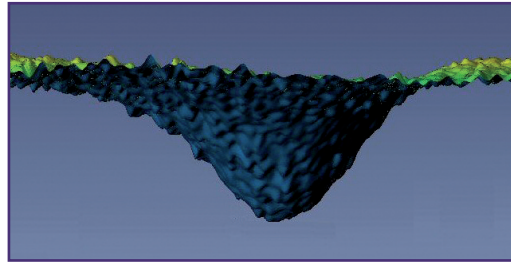
IN-VIVO

Length of the DEJ: +3.5% on average and up to +13%.
DEJ Index: +0.05 units on average and up to 0.22 units.
Biological rejuvenation of the skin: 4 years on average.

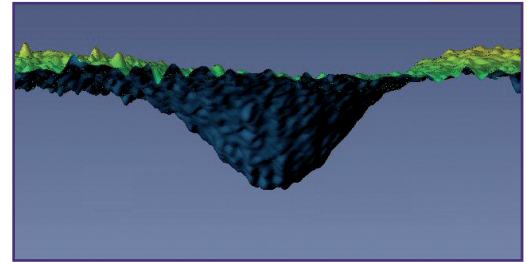
Deformation of skin exposed to an air stream (Dynaskin):
Volume of depression: -4% on average and up to -34%.
Depth of depression: -2% on average and up to -25%.

View of the depression generated by applying a compressed air stream to the skin (Dynaskin method).

After applying Silenage twice a day for 28 days the skin is more resistant to physical stresses, showing an increase in its tone.

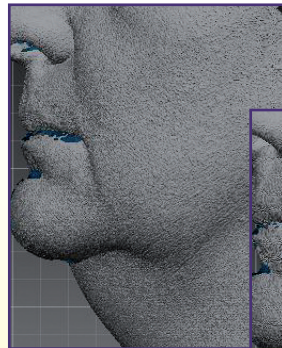


D0

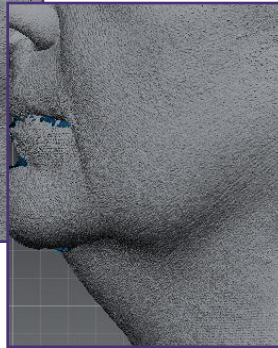


D28

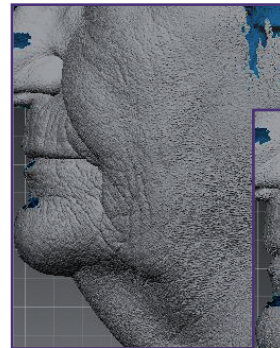
The contours of the face are retightened. The jowls and nasal furrows are less visible.



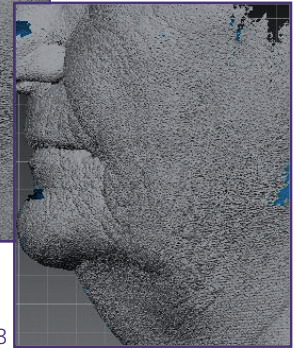
D0



D28



D0



D28

INDICATIVE FORMULATION

Zen Architect

Phase	Raw material / Trade name	INCI name	%
A	DEMINEALISED WATER	Water	79.43
	ELESTAB CPN (1)	Chlorphenesin	0.27
B	COVACRYL MV60 (2)	Sodium Polyacrylate	2.00
	DOUBLE DISTILLED GLYCERINE CODEX (3)	Glycerin	3.00
	AXOL C62 PELLETS (4)	Glyceryl stearate citrate	4.00
C	REFINED APRICOT KERNEL OIL (5)	Prunus armeniaca kernel oil	2.00
	M.O.D. (6)	Octyldodecyl myristate	3.00
	ISOSTEARYLE ISOSTEARATE (6)	Isostearyl isostearate	2.00
	CAPRYLIC/CAPRIC TG MB RSP0 (7)	Caprylic/capric triglyceride	2.00
	PHENOXYETHANOL (8)	Phenoxyethanol	0.80
	COVI-OX T90EU C (1)	Tocopherol & Helianthus annuus seed oil	0.05
D	PERFUME	Perfume	0.05
	SILENAGE GP (9)	Glycerin & Water & Phenoxyethanol & Saponins & Mineral salt	1.00
	SOLUTION RED CI:1720 0.1 POURCENT (10)	Water & Ci 17200	0.40

(1) A.M.I. ; (2) LCW ; (3) QUIMASSO FRANCE EURL ; (4) ADARA ; (5) OLISUD ; (6) GATTEFOSSE FRANCE SA ; (7) STEARINERIE DUBOIS ; (8) BIOPHILL ; (9) CODIF Technologie Naturelle ; (10) UNIVAR

PROCEDURE

• Heat phase A to 75°C in an emulsifier with gentle stirring. • Add pre-mixed B (prepared previously in a deflocculator) and emulsify at 2500 rpm for 15 minutes. • Heat Phase C to 75°C. • Emulsify C in AB in an emulsifier at 2500 rpm for 10 minutes. • Cool down to 35°C while stirring gently • Add the D ingredients one by one while stirring gently and keep mixing for 20 minutes. • Check the pH.

HOW TO USE IT

Water soluble active ingredient to be used at 1% in:

An energising anti-ageing personal care product with **EARLY BOOST**

A youth formula for sensitive skins with **AREAUMAT PERPETUA**

A slimming toning gel with **B-SHAPE**

INCI

SILENAGE GP

Glycerin (and) Water (and) Phenoxyethanol (and) Saponins (and) Mineral salt

SILENAGE G

Glycerin (and) Water (and) Saponins (and) Mineral salt



infotech@codif-tn.com

commercial@codif-tn.com

70, rue du Commandant l'Herminier - CS 11781 - 35417 Saint-Malo cedex - FRANCE

Tel : +33-2-23-18-31-07 - Fax : +33-2-23-18-31-01

www.codif-tn.com



RPDOC162GB